

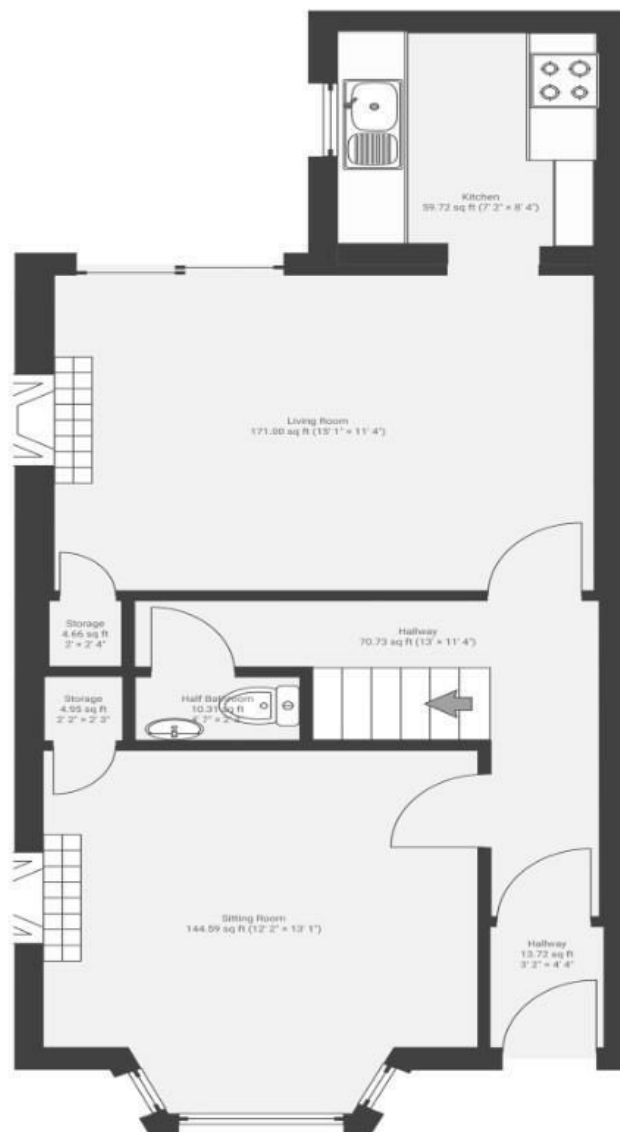
# Gwilliam Street

## BEDMINSTER

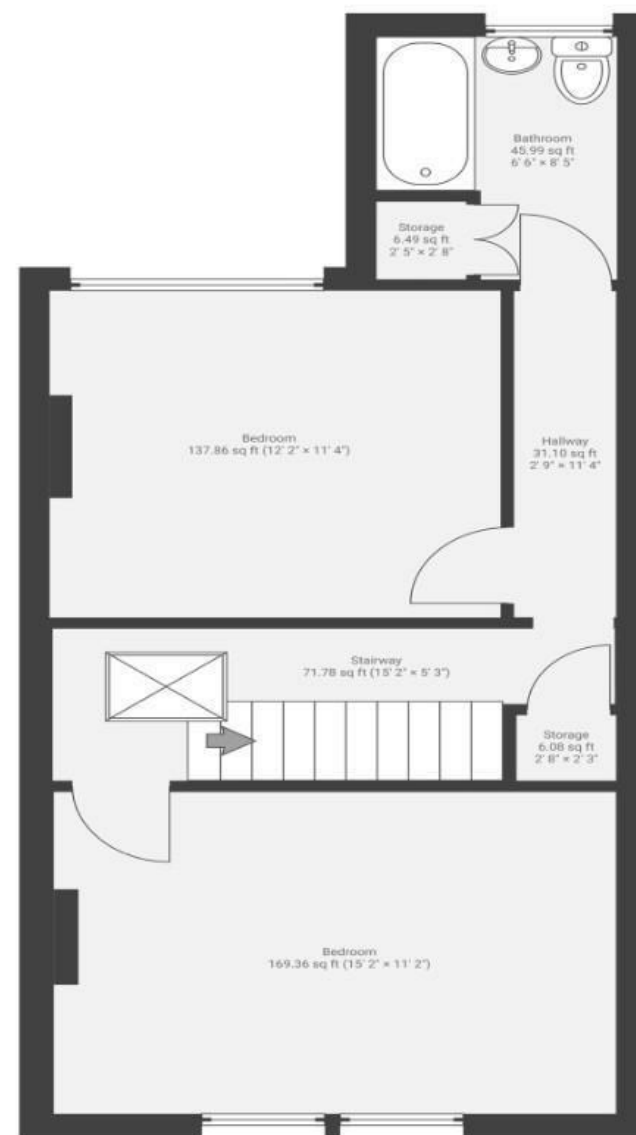
APPROXIMATE FLOOR AREA  
95.0 SQM / 1022 SQFT



GROUND FLOOR



FIRST FLOOR



Illustrations are for reference purposes only, measurements are approximate, not to scale.

**Boardwalk**

# Gwilliam Street , BRISTOL

£

£450,000



BS3 4LT

zzz

2 Bedrooms



1 Bathrooms

*"It's the perfect size in a wonderful location close to the city on a quiet road. Once you're inside, the views are stunning and light floods in, you don't feel as if you're in a city! I love that you can hear and see the city farm. But if you do have to go out, great transport links, shops, pubs, cafes and bars are all easily walkable. But best of all is the local community. Kind, welcoming, arty, that's Gwilliam Street!"*

